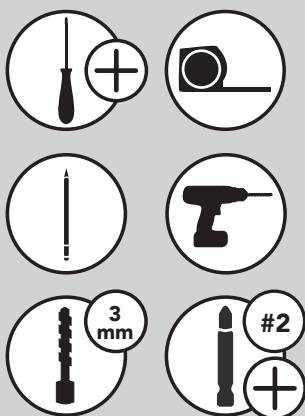




INSTALLATION INSTRUCTIONS

SIDEMOUNT PULLOUT 150 MM

TOOLS REQUIRED:

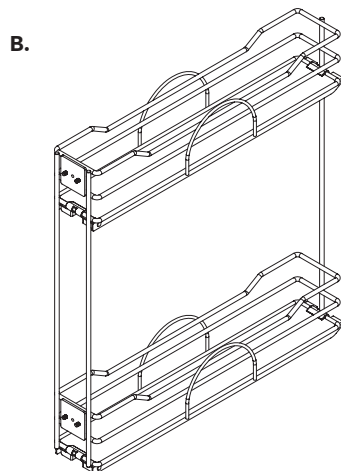
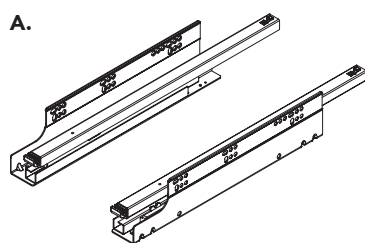


ESTIMATED ASSEMBLY TIME:

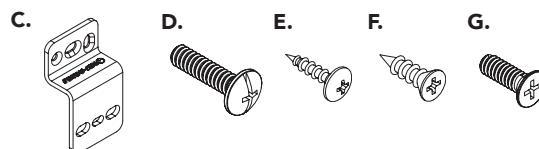
30 MIN

CARE AND MAINTENANCE:

- Clean with a damp cloth and wipe parts dry
- Lubricate pivot points as needed



Parts List		
No.	Description	Qty
A	Slide	1 Set
B	Basket	1
C	Door Mounting Bracket	1 Set
D	M5 x 20 mm Machine Screws	2
E	4G x 18 mm Pan Head Screws	8
F	4G x 18 mm Flat Head Screws	6
G	M5 x 15 mm Flat Head Screws	4



CHOOSING THE DESIRED BOTTOM SHELF

The shelf on the basket is reversible. You can have a white or gray bottom. To change the color remove the retaining clips. Flip the board over and put clips back into place (See Figure A).

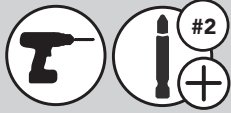
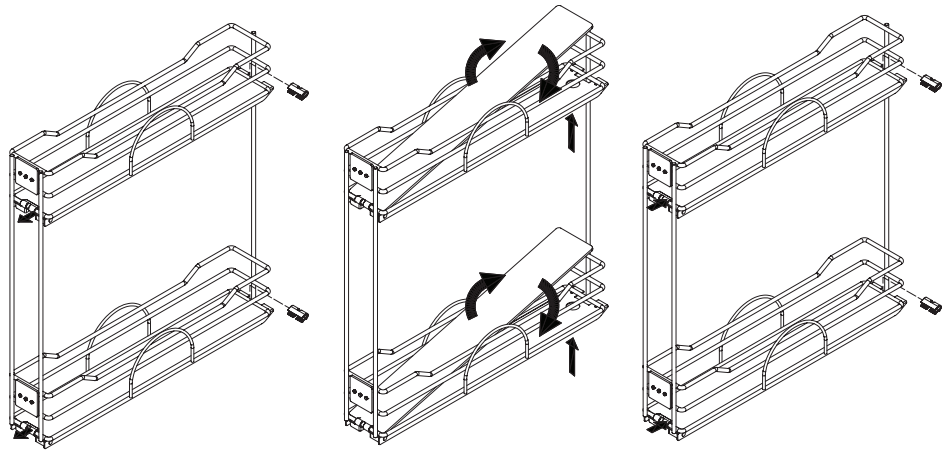


FIGURE A



STEP 1

Using the dimensions in **Figure B**, install the slides to the side of the cabinet using (6) of the 4G x 18 mm pan head wood screws.

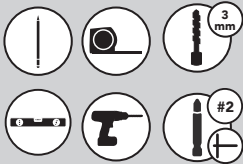
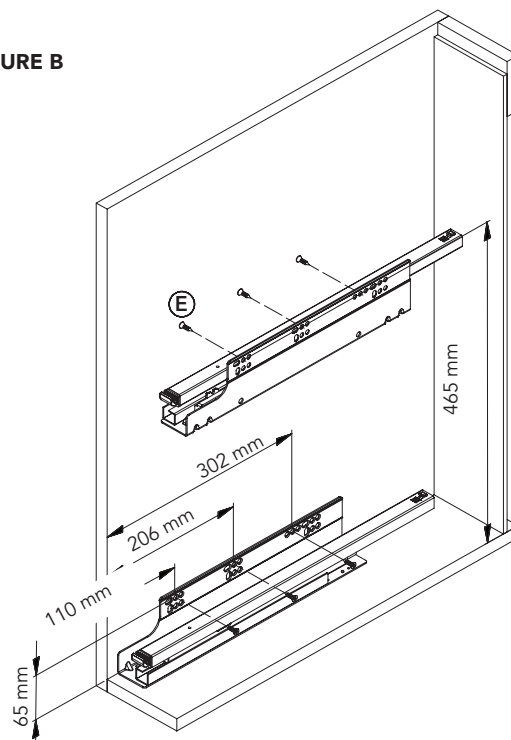


FIGURE B



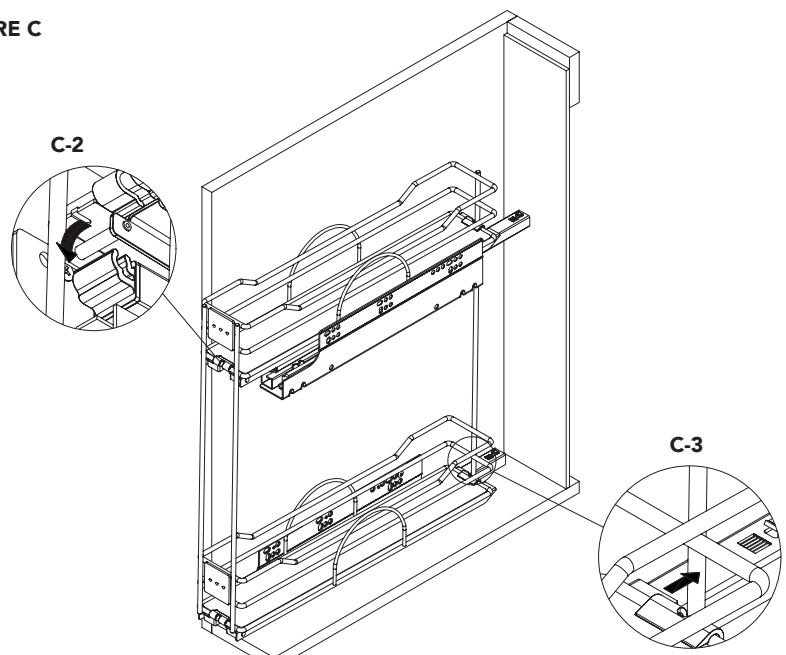
STEP 2

Slide the unit onto the slides by placing the back of the unit on the back of the slides. This engages the hook mechanism, then press the slides down. You will hear a click, and the slides are engaged (See Figure C).

C-2 is a close up image of pressing down so the slides are fully engaged.

C-3 is a close up image of sliding the unit onto the back of the slide.

FIGURE C



STEP 3

Using the dimensions in **Figure D**, mount the door mounting brackets to the door using (6) 4G x 18 mm flat head wood screws.

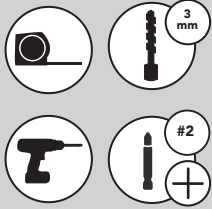
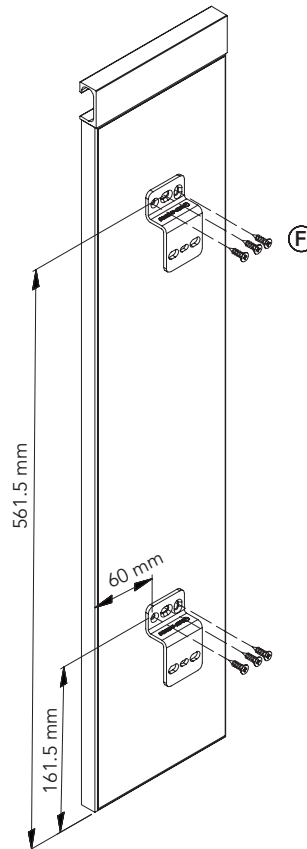


FIGURE D



STEP 4

Secure the unit to the door mounting brackets by using the (4) M5 x 15 mm flat head screws (See **Figure E**).

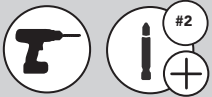
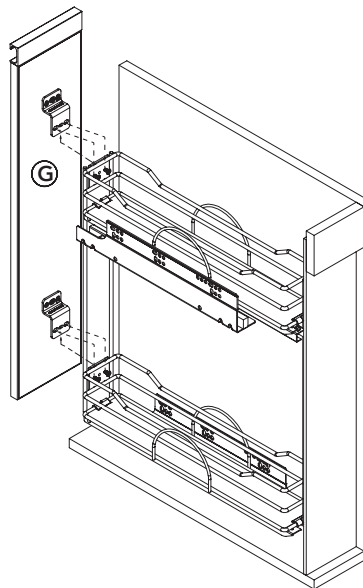


FIGURE E



STEP 5

Screw in the (2) M5 x 20 mm pan head screws into the center hole on the door mounting brackets to further secure the brackets to the unit (See **Figure F**).

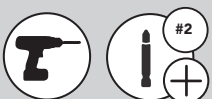
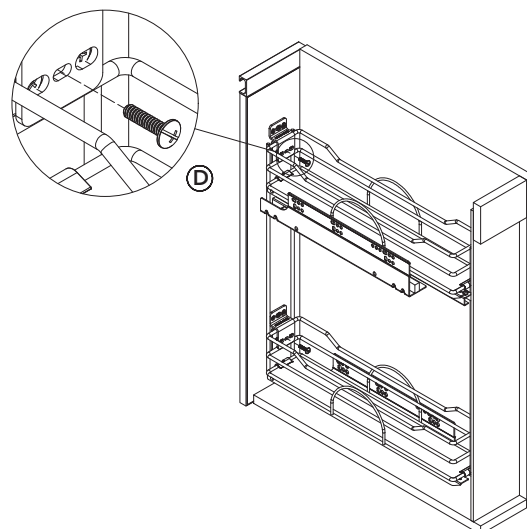


FIGURE F



DOOR ADJUSTMENT

If the cabinet door is not lining up correctly, use the images in **Figures D-1 through D-3** to loosen and tighten the door mounting screws to properly adjust the cabinet door.

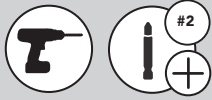


FIGURE D-1

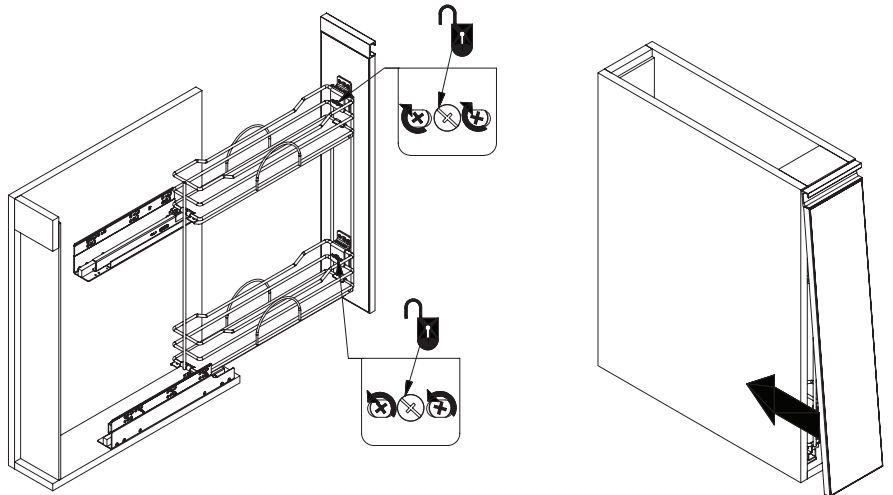


FIGURE D-2

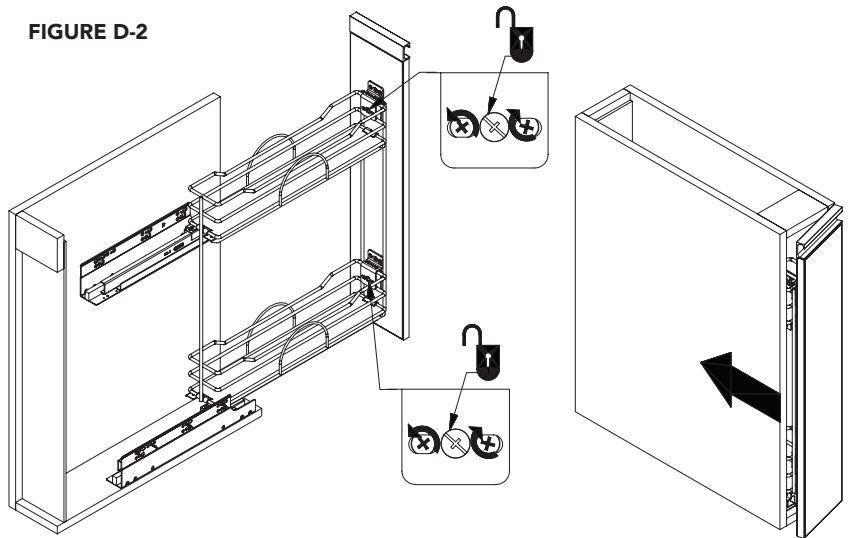


FIGURE D-3

